

FX Pool Light

120 Volt or 12Volt



Owners Manual



Fiberstars
44259 Nobel Drive
Fremont, CA 94538
www.fiberstars.com



CAREFULLY READ AND FOLLOW ALL SAFETY INSTRUCTIONS IN THIS MANUAL AND ON THE LIGHT AND ASSOCIATED EQUIPMENT.

⚠ WARNING **HAZARDOUS VOLTAGE** Incorrectly installed equipment may fail, causing severe injury or property damage.
Have a certified electrician perform all tests before operating equipment.

⚠ CAUTION To prevent the risk of damage or injury, do not operate the light out of water for more than 5 minutes. Allow the light to cool down before installing underwater.

ATTENTION

Fiberstars JAZZ and FX Series Wet-Niche Lighting Fixtures for Swimming pool and Spa are now ETL Classified for use with the following manufactures Wet-Niches for use in new Pool and Spa construction. PENTAIR, (American) model no. 79206700 (ABS), model no. 7821XXXX (S/S), 7823XXXX (S/S), model no. 620004 (ABS) HAYWARD, model no. SP0607U (ABS, Vinyl) SP0600U (ABS, Concrete)

ETL Classification Report No. 3040481

ATTENTION

FIBERSTARS FX LIGHTS ARE UL LISTED FOR USE IN STA-RITE WET NICHE TYPE FIXTURE ONLY. Model numbers, (S/S) 05161-2352, 05161-2353, 05161-2354, 05161-2355, 05161-2356, 05161-2357, 05161-2358, 05161-2359, 05161-2360, 05161-2361, 05161-2362, 05161-2363, 05161-2364, 05161-2365, 05161-2366, 05161-2367, 05161-2368, 05161-2369, (ABS) 05163-2394, 2395 & 2396

UL File No. E220601

⚠ WARNING **Risk of electrical shock.** Before removing fixture from pool wall, ALWAYS TURN OFF THE POWER at the breaker.

All 12 Volt lamps require the installation of a 12 Volt transformer.

Install this light and light niche in accordance with Article 680 of the National Electrical Code (NEC), in the United States.

Install an approved Ground Fault Circuit Interrupter in the electrical circuit for this light.

All devices in the system must be directly grounded to a positive electrical ground. All devices in the system must meet all applicable code requirements for bonding.

⚠ CAUTION Operating pool light at a reduced voltage will diminish the lighting of your pool during nighttime use. Failure to provide adequate lighting may result in swimming and diving hazards which can cause severe injury or death

⚠ WARNING Long cord length and insufficient voltage will cause reduced light output and unit failure. FX will not operate with less than 9 volts (9v) at the light when loaded. Operate only on 12v loaded transformer voltage with a cord length of under 30ft. See installation manual for further information.

Use Fiberstars FX cord only								
Loaded Transformer Voltage	30ft		50ft		75ft		100ft	
	Voltage at Lamp	Change in Brilliance	Voltage at Lamp	Change in Brilliance	Voltage at Lamp	Change in Brilliance	Voltage at Lamp	Change in Brilliance
12V	11.0	-27%	10.4	-35%	9.9	-44%	9.3	-56%
13V	12.0	0%	11.2	-18%	10.6	-33%	10.0	-42%
14V	DO NOT USE		12.0	0%	11.5	-12%	10.9	-26%

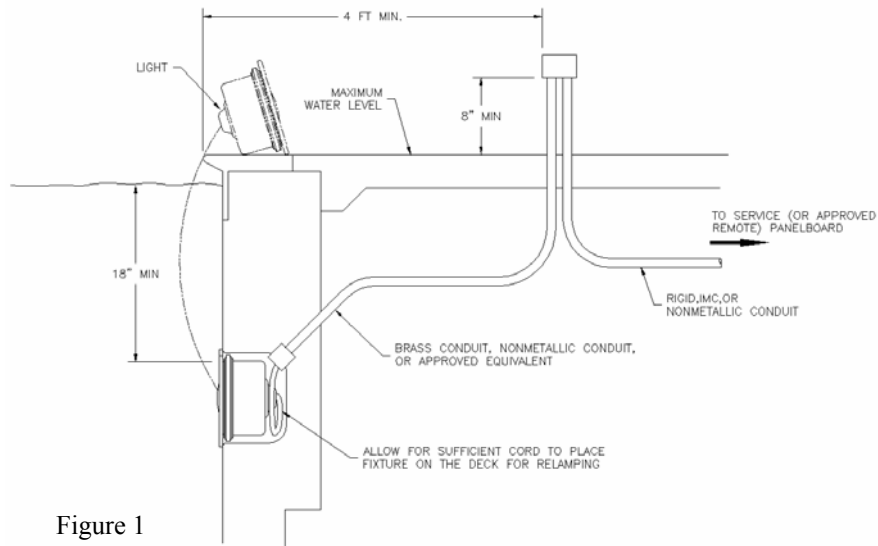


Figure 1

Install fixture in a vertical pool or spa wall – not in floor. Failure to install the fixture properly could result in personal injury and/or property damage.

Except when the fixture is installed in an area of the swimming pool that is not used for swimming and the lens is adequately guarded to keep any person from contacting it, the fixture

shall be installed in or on the wall of the pool with the top of the lens not less than 18 in. below the normal water level of the pool; see Figure 1.

The junction box must be located:

- At least 4' from the perimeter of the pool (unless separated from the pool by a solid fence, wall or other permanent structure,
- At least 8" above maximum water level,
- At least 4" above the deck or ground level.

Junction boxes should be located off the walkway around the pool and given additional protection by installing them next to a fence, building, or other permanent structure. Make sure that the installation is in compliance with local codes, and the NEC.

A Ground Fault Circuit Interrupter (GFCI) and an appropriately rated circuit breaker shall be installed in the branch circuit supplying power to fixtures so that there is no shock hazard during re-lamping.

Lamp Housing Installation

⚠ CAUTION **Glass breakage hazard.** Do not push off from the poolside against the light.

Installation of a 12 Volt transformer is required when installing the 12 Volt model of this light. The transformer must be located:

- At least 10' from the pool wall,
- Installed near a grounded, 3-prong, 120V, GFCI protected outlet, have a qualified electrician install one.

Light Fixture Installation

1. Before installing light fixture, make sure power to light is off.
2. Feed cord through niche and conduit, while light fixture is on deck area right above the niche. Feed cord to junction box leaving enough cord, about 3' to allow fixture to be placed on deck to allow relamping.
3. Make connections in the junction box (be sure to follow code requirements!). When connecting wires to the junction box, connect supply circuit grounding wire (green, green and yellow, or bare copper) to the green ground conductor from the light fixture. Connect the line supply wire (the black or 'hot' wire) to the black wire from the light fixture. Connect the neutral (white) supply wire to the neutral (white) wire from the light fixture.

4. Insert cord into the niche and place the lamp housing in the niche. Be sure that the locator tab on the bottom of the lamp housing is in the notch at the bottom of the niche.
5. Insert the top screw into top hole on niche and tighten.

MAINTENANCE

⚠ WARNING **Hazardous voltage.**

⚠ WARNING **Electrical shock hazard.** Before removing fixture from pool wall, ALWAYS TURN OFF THE POWER at the breaker. Installation and maintenance of this circuit, the light, light niche, and any other accessories attached to this circuit must be performed by a licensed electrician. The complete electrical system must be installed, tested, and approved by a licensed electrician before it is placed in operation.

⚠ WARNING **Risk of cuts, burns, and electrical shock.** Avoid direct impacts on glass lens. Do not install damaged or broken lens.

1. Be sure that the power is off. Allow the lamp to cool before re-lamping.
2. Loosen the captive leader screw from the top of the fixture trim ring.

NOTICE: The screw in the trim rim may be recessed.

3. Remove the lamp housing and place on the pool deck.
4. Remove screw from clamp.
5. Replace gasket. To reassemble the lens assembly to the lamp housing, reverse the disassembly process. Be sure that the lamp housing is clean, dry, and free of all traces of moisture, before sealing the fixture.
6. Insert cord into niche and place the lamp housing back in the niche. Be sure to align the locator tab at the bottom of the lamp housing with the notch in the bottom of the niche.
7. Fasten the lamp housing into the niche using the captive leader screw at the top of the trim ring.



Risk of Electrical Shock or Electrocution.

This fixture must be properly installed in accordance with the National Electrical Code and all applicable local codes and ordinances by a certified or licensed Electrician. Failure to do so may result in serious injury to occupants, installers, or cause property damage due to the resulting electrical hazards. Read and follow all instructions.

Volts and Amp rating for FX12VAS and FX120VAS are as follows, FX120V (Color) – 120 Volts 1.25 Amps. FX12V (Color) – 12 Volts 8.75 Amps

The FX Light uses a single switch to control on/off and color control. The switch can be a standard wall switch to a pool system, electric control system (i.e. Jandy RS) or a Fiberstars wireless control remote (RM-400).

When lighting a pool and Spa we recommend using independent FX lights so that the Pool and Spa can be controlled independently. This gives the customer the ability to choose different colors for the Pool and Spa. (i.e. Pool on blue and Spa on magenta)

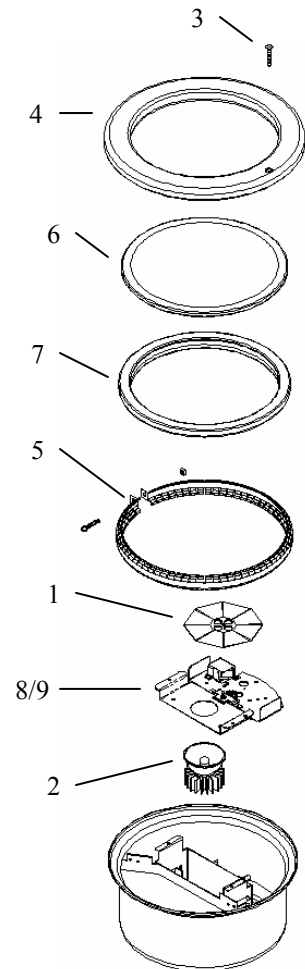
FX-AS Light Control and Operating Instructions for FX12VAS, FX120VAS (AS)

1. Switch to on position – FX turns on and color stays on last color.
2. Switch off/on – Within 15 seconds, color wheels will rotate to home and pause, before they begin to rotate in sync.
3. Switch off/on – Color wheel stops on color chosen.
4. Switch off/on – repeat step #2.
5. Switch off for a minimum of 3 seconds and the unit will reset to step #1.

FX120VAS, FX12VAS

Item No.	Part No.	Description
1	J10-2000	Color Wheel (sync)
2	FX-L	12V Halogen Lamp replacement kit
3	J30-3000	Pilot Screw, with neoprene washer
4	J30-4000	Face Ring, Stainless Steel
5	J30-5000	Compression Clamp
6	J30-6000	Tempered Lens
7	J30-7000	Gasket, Lens
8	J30-8000	FX120v non-sync color wheel motor assy
9	J30-9000	FX12v non-sync color wheel motor assy

NOTE: When ordering replacement Color Wheel Motor assembly make sure you use the correct FX model number and voltage rating of the fixture that you have installed.



SAVE THESE INSTRUCTIONS.