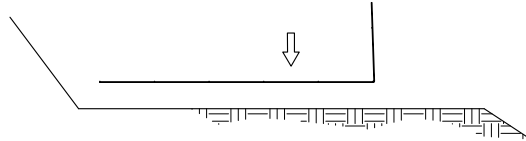


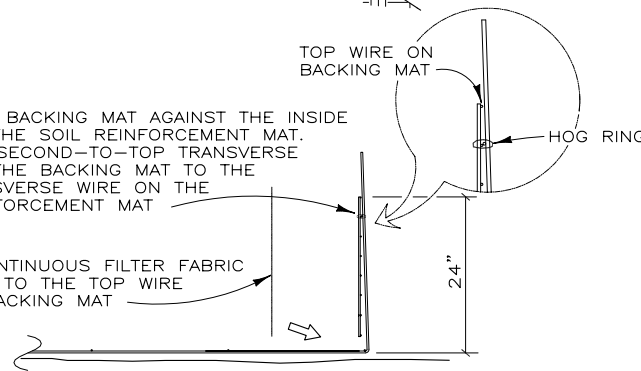
FOUNDATION

1. PLACE THE FIRST COURSE OF SOIL REINFORCEMENT MATS ON PREPARED FOUNDATION



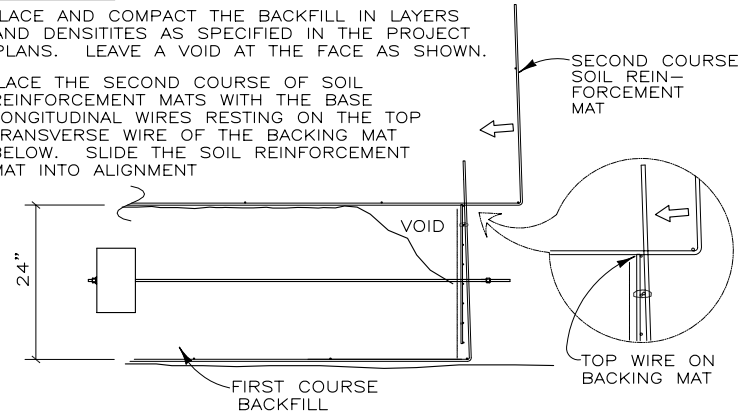
BOTTOM MAT

1. PLACE THE BACKING MAT AGAINST THE INSIDE FACE OF THE SOIL REINFORCEMENT MAT. CLIP THE SECOND-TO-TOP TRANSVERSE WIRE ON THE BACKING MAT TO THE TOP TRANSVERSE WIRE ON THE SOIL REINFORCEMENT MAT
2. INSTALL CONTINUOUS FILTER FABRIC HOG-RING TO THE TOP WIRE ON THE BACKING MAT



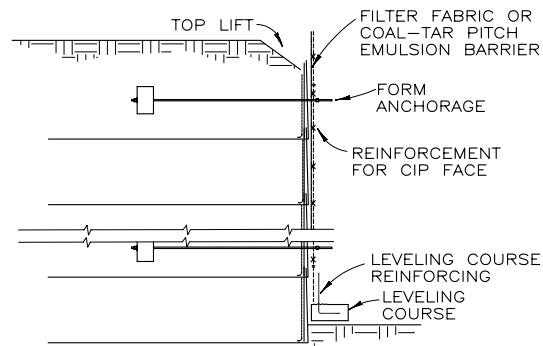
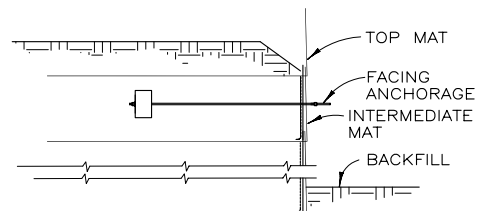
INTERMEDIATE MAT

1. PLACE AND COMPACT THE BACKFILL IN LAYERS AND DENSITIES AS SPECIFIED IN THE PROJECT PLANS. LEAVE A VOID AT THE FACE AS SHOWN.
2. PLACE THE SECOND COURSE OF SOIL REINFORCEMENT MATS WITH THE BASE LONGITUDINAL WIRES RESTING ON THE TOP TRANSVERSE WIRE OF THE BACKING MAT BELOW. SLIDE THE SOIL REINFORCEMENT MAT INTO ALIGNMENT



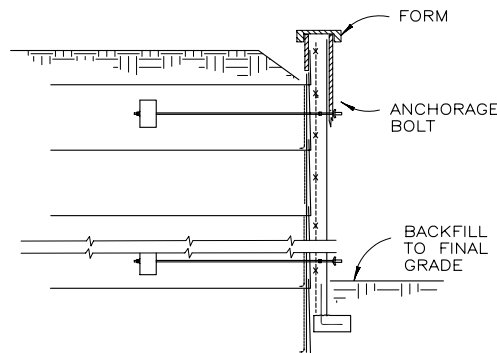
TOP LIFT

1. INSTALL THE FORM ANCHORAGES TO THE SPACING SHOWN IN THE PROJECT PLANS
2. INSTALL TOP MAT. THERE IS NO BACKING MAT INSIDE THE FACE OF THE TOP LIFT
3. BACKFILL TO ANCHOR THE TOP MAT
4. BACKFILL TOE OF WALL TO ELEVATION OF BOTTOM OF LEVELING COURSE



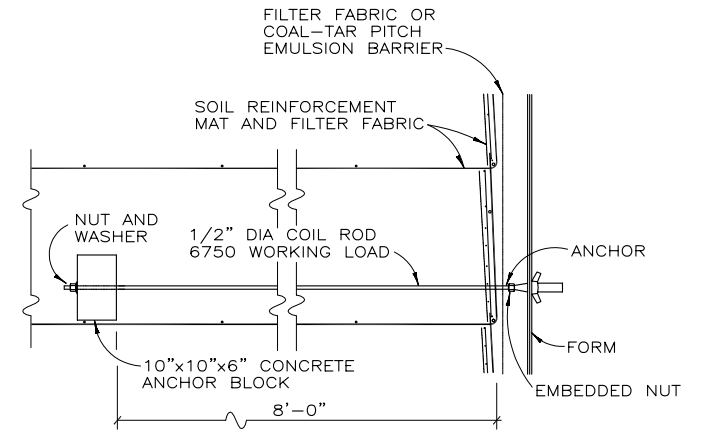
LEVELING COURSE, REINFORCING

1. INSTALL FILTER FABRIC OR COAL-TAR PITCH EMULSION BARRIER
2. POUR LEVELING COURSE TO ELEVATION SHOWN IN THE PROJECT PLANS
3. INSTALL REINFORCING FOR CAST-IN-PLACE FACE



CASTING THE FACE

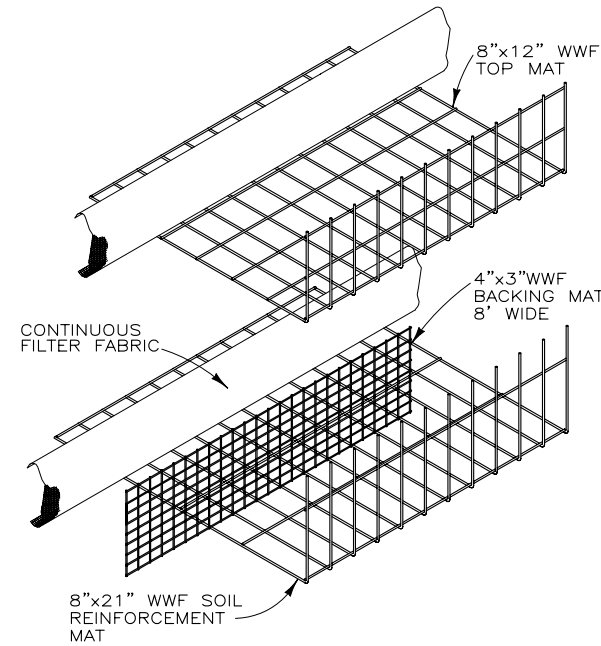
1. ATTACH THE FORMS TO THE FORM ANCHORAGE BOLTS
2. CAST CONCRETE AS SHOWN IN PROJECT PLANS
3. STRIP FORMS AND BACKFILL AT TOE TO FINAL GRADE
4. FINISH TOP OF WALL PER PROJECT PLANS



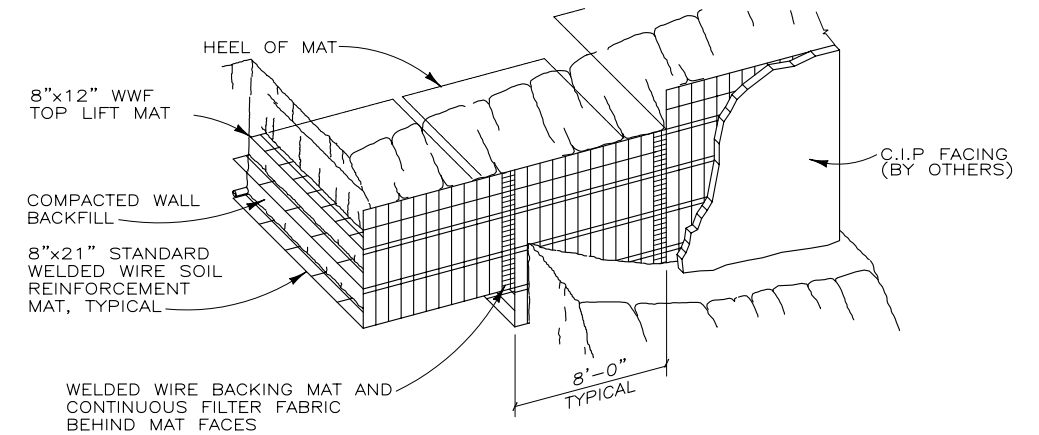
FORM ANCHORAGE DETAIL
NOT TO SCALE

NOTES:

1. A POUR RATE OF 4' PER HOUR CAN BE ACHIEVED USING A 4-FOOT SQUARE ANCHOR PATTERN.
2. METHOD OF ATTACHING FORMS MAY VARY FROM THIS DETAIL. SEE PROJECT PLANS FOR FURTHER DETAILS.



WALL COMPONENTS
NOT TO SCALE

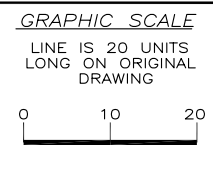


PICTORIAL ELEVATION
NOT TO SCALE

CONSTRUCTION SEQUENCE

ERS CIPBx21
THIS DRAWING IS FURNISHED SOLELY FOR THE USE OF OR IN CONNECTION WITH THIS PROJECT. AND THE PROPRIETARY INFORMATION SHOWN HEREON IS NOT TO BE TRANSMITTED TO ANY OTHER ORGANIZATION WITHOUT SPECIFIC AUTHORIZATION BY THE HILFIKER COMPANY. HILFIKER RETAINING WALLS ARE PROTECTED BY ONE OR MORE OF THE FOLLOWING PATENTS: 243,613; 243,697; 288,616; 4,117,686; 4,329,089; 4,324,508; 4,391,557; 4,505,621; 4,643,618; 4,661,023; 4,856,939; 5,076,735; 5,647,695; 5,722,799; 6,357,970 AND OTHERS. OTHER PATENTS PENDING (2004)

REV. NO.	DATE	BY	DESCRIPTION
1	1/25/01	DR	MINOR REVISIONS
2	4/15/02	DR	REVISED BORDER



PROJ. MGR.
ENGINEER
CADD BY
DR

HILFIKER RETAINING WALLS
3900 Broadway Eureka, CA 95503
P.O. Box 2012 Eureka, CA 95501
707-443-5093 Fax 707-443-2891
Toll-Free 800-762-8962
Web: <http://hilfiker.com> email: info@hilfiker.com



DWG DATE
31 AUG 00
REVISION DATE
15 APR 02
SCALE
NOTED

STANDARD DRAWING
EUREKA REINFORCED SOIL EMBANKMENT WITH C.I.P. FACE
DETAILS

PROJECT NO.
SHEET
1
OF 1